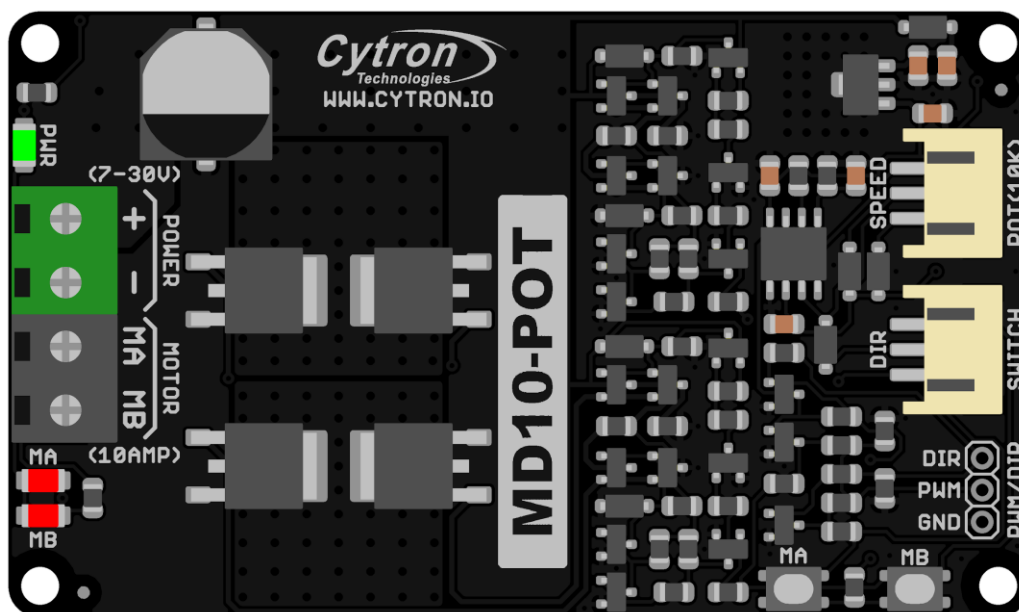




# **MD10-POT**

## **Potentiometer and Switch Control**

### **10Amp DC Motor Driver**



## **Datasheet**

Rev 1.0  
Oct 2018

Information in this publication regarding device applications and the like is intended through suggestion only and may be superseded by updates. It is your responsibility to ensure that your application meets with your specifications. No representation or warranty is given and no liability is assumed by Cytron Technologies Incorporated with respect to the accuracy or use of such information or infringement of patents or other intellectual property rights arising from such use or otherwise. Use of Cytron Technologies's products as critical components in life support system is not authorized except with express written approval by Cytron Technologies. No licenses are conveyed, implicitly or otherwise, under any intellectual property rights.

## 1. BOARD LAYOUT & FUNCTION

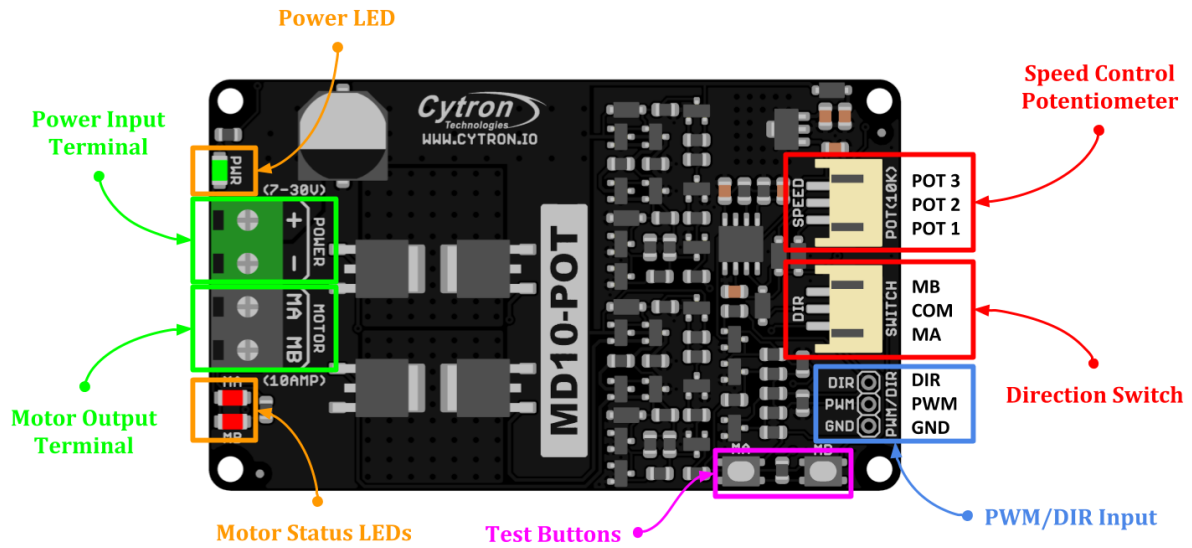


Figure 1: MD10-POT Board Functions

Function	Description
<b>Power Input Terminal</b>	Connect to battery.
<b>Motor Output Terminal</b>	Connect to motor.
<b>Power LED</b>	Turn on when power up.
<b>Motor Status LEDs</b>	Turn on when the motor is running.
<b>Test Buttons</b>	Press to test the functionality of the motor / driver.
<b>Speed Control Potentiometer</b>	Connect to 10KΩ potentiometer for motor speed control.
<b>Direction Switch</b>	Connect to SPDT Switch for motor direction control.
<b>PWM/DIR Input</b>	Use this to control the motor with PWM signal. DIR pin is used for direction control. Refer to Table 2 below for truth table.

Table 1: MD10-POT Board Functions

PWM	DIR	Output A (MA)	Output B (MB)	Motor
Low	X (Don't Care)	Low	Low	Brake
High	Low	High	Low	Forward
High	High	Low	High	Reverse

Table 2: PWM/DIR Input Truth Table

## 2. SPECIFICATIONS

No	Parameters	Min	Max	Unit
1	Power Input Voltage	7	30	V
2	Maximum Motor Current - Continuous	-	10	A
3	Maximum Motor Current - Peak (Less than 10 seconds)	-	30	A
4	Logic Input Voltage - Low Level (PWM, DIR)	0	0.5	V
5	Logic Input Voltage - High Level (PWM, DIR)	3	30	V
6	Internal PWM Generator Frequency (Output frequency when potentiometer is used)	9	11	KHz
7	External PWM Input Frequency (Output Frequency = Input Frequency)	DC	20	KHz

Table 3: MD10-POT Absolute Maximum Ratings

## 3. DIMENSION

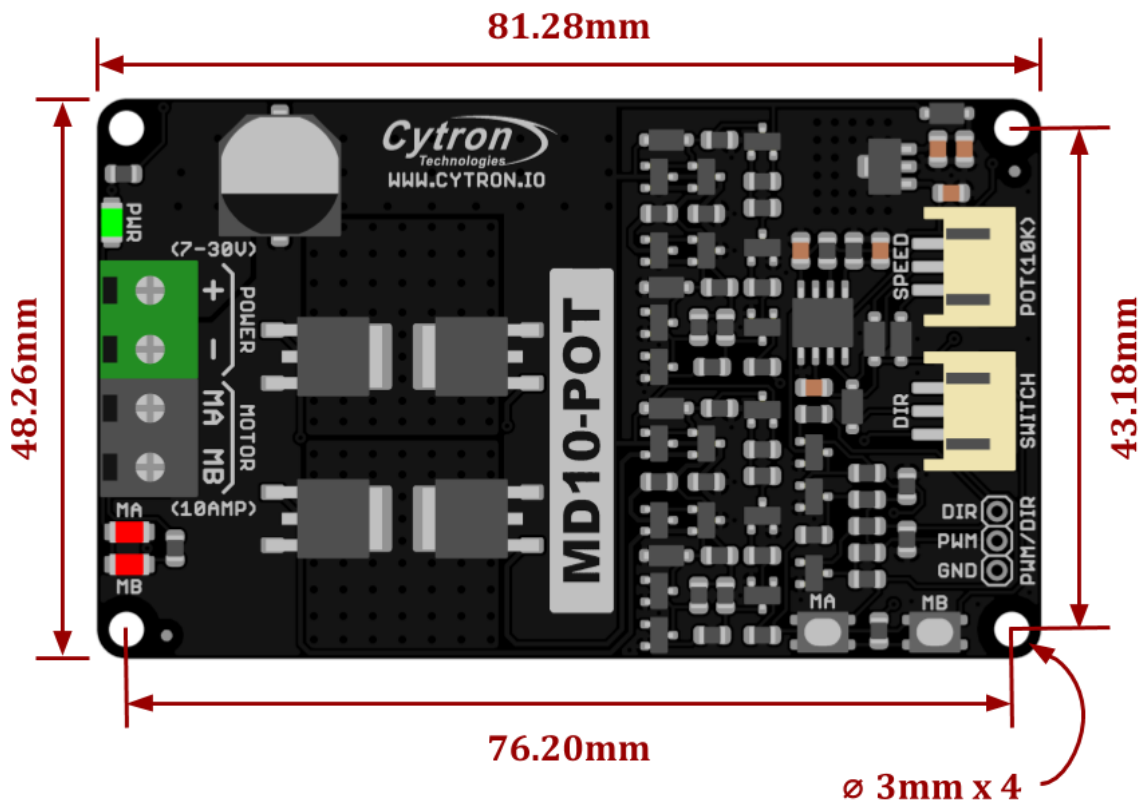


Figure 2: MD10-POT Dimension

*Prepared by:*

***Cytron Technologies Sdn Bhd***

[www.cytron.io](http://www.cytron.io)

No. 1, Lorong Industri Impian 1,  
Taman Industri Impian,  
14000 Bukit Mertajam,  
Penang, Malaysia.

*Tel:* +604 - 548 0668

*Fax:* +604 - 548 0669

*Email:*

[support@cytron.io](mailto:support@cytron.io)

---

*[sales@cytron.io](mailto:sales@cytron.io)*