

SCT013 Split core current transformer

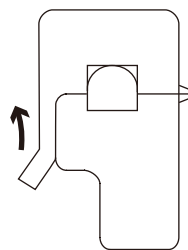


Product features

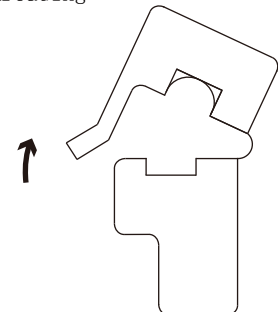
- Safety lock buckle, Simple installation
- Audio connector output
- Lead type output, The length can be customized
- Suspended mounting

Installation diagram

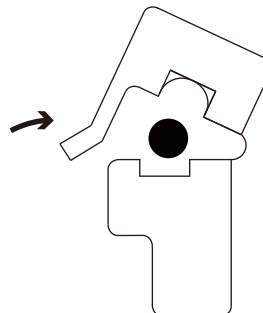
One time threading



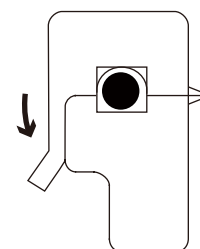
1. Open the buckle



2. Open the buckle



3. Drop lead



4. Fasten the buckle

Product application

- Portable instrument
- Household metering
- Monitoring the load of the machine

Product advantage

- Small volume, Light weight
- Low cost
- High turns, High precision

Typical technical index:

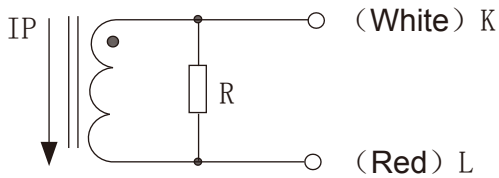
- Core material——ferrite
- Working voltage——Phase voltage \leq 720V
- Working temperature—— $-25^{\circ}\text{C} \sim +60^{\circ}\text{C}$
- Storage temperature—— $-30^{\circ}\text{C} \sim +90^{\circ}\text{C}$
- Frequency range——50Hz \sim 1KHz
- Electrical resistance—— input (Bare conductor) /output AC 800V/1min 5mA 50Hz
output /Outer shell AC 3.5KV/1min 5mA 50Hz

Electrical parameters

Model	Input current	output	Turns	Load resistance	Accuracy	linearity	weight
SCT013-000	100A	50mA	1: 2000	10 Ω	1%	1%	50g
SCT013-005	5A	1V	-	built-in	1%	1%	50g
SCT013-010	10A	1V	-	built-in	1%	1%	50g
SCT013-015	15A	1V	-	built-in	1%	1%	50g
SCT013-020	20A	1V	-	built-in	1%	1%	50g
SCT013-025	25A	1V	-	built-in	1%	1%	50g
SCT013-030	30A	1V	-	built-in	1%	1%	50g
SCT013-050	50A	1V	-	built-in	1%	1%	50g
SCT013-060	60A	1V	-	built-in	1%	1%	50g
SCT013-100	100A	1V	-	built-in	1%	1%	50g

Model	Input current	output	Turns	Load resistance	Accuracy	linearity	weight
SCT013	5A	0.333V	-	built-in	1%	1%	50g
SCT013	10A	0.333V	-	built-in	1%	1%	50g
SCT013	15A	0.333V	-	built-in	1%	1%	50g
SCT013	20A	0.333V	-	built-in	1%	1%	50g
SCT013	25A	0.333V	-	built-in	1%	1%	50g
SCT013	30A	0.333V	-	built-in	1%	1%	50g
SCT013	50A	0.333V	-	built-in	1%	1%	50g
SCT013	60A	0.333V	-	built-in	1%	1%	50g
SCT013	100A	0.333V	-	built-in	1%	1%	50g

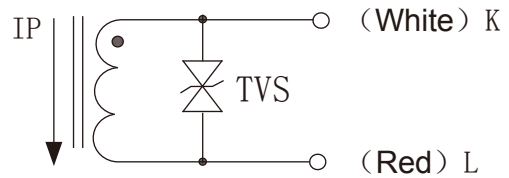
Wiring schematic diagram:



Built-in with sampling resistance

Voltage output type

Secondary are not allowed to short circuit

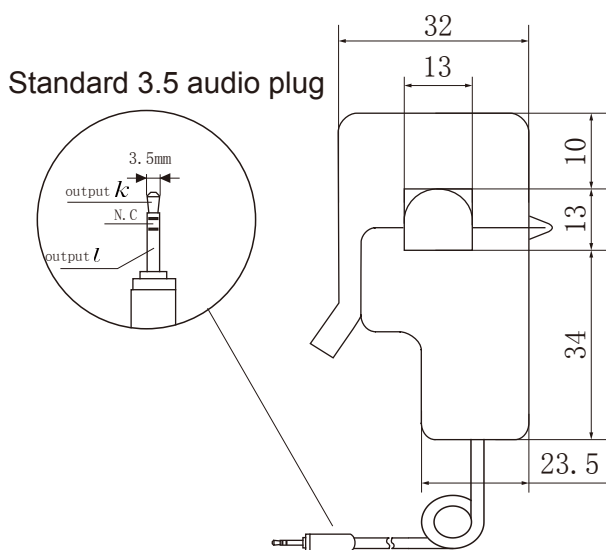


TVS: Transient voltage suppressor

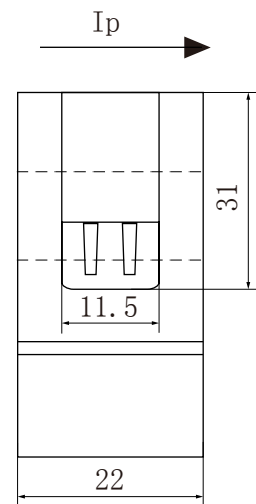
Current output type

Secondary does not allow open circuit

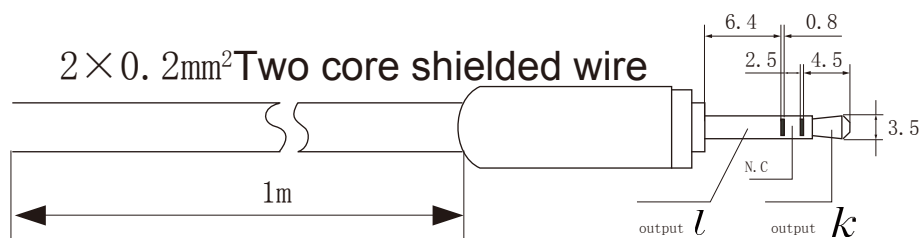
Dimensions (in mm) :



Front view



Side view



Standard three-pin plug diagram