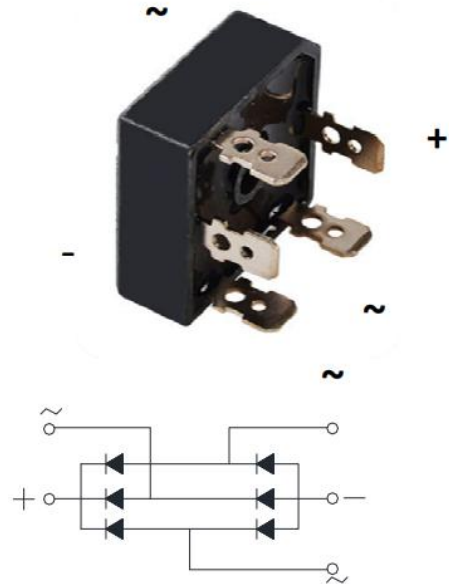


FEATURES

- High surge current capability
- Easy chassis mounting
- High voltage ratings up to 1600V
- Minimum Lot-to-Lot variations for robust device performance and reliable operation

APPLICATIONS

- Battery charges
- DC motor drives
- Various rectifiers



ABSOLUTE MAXIMUM RATINGS

SYMBOL	PARAMETER	VALUE	UNIT
V_{RRM}	Repetitive Peak Reverse Voltage	1600	V
I_O	Average Rectified Output Current @60Hz sine wave, R-load, With heatsink $T_c=55^{\circ}C$	35	A
I_{FSM}	Surge(Non-repetitive)Forward Current @60HZ Half- sine Wave, 1 cycle, $T_a=25^{\circ}C$	425	A
$I^2 t$	Current Squared Time @ $1ms \leq t < 8.3ms$ $T_j=25^{\circ}C$, Rating of per diode	750	A ² S
T_J	Junction Temperature	-55~150	$^{\circ}C$
T_{stg}	Storage Temperature Range	-55~150	$^{\circ}C$
V_{dis}	Dielectric Strength, Terminals to case, AC 1 minute	2.5	KV

THERMAL CHARACTERISTICS

SYMBOL	PARAMETER	MAX	UNIT
$R_{th\ j-c}$	Thermal Resistance, Junction to Case	1.35	$^{\circ}C/W$

ELECTRICAL CHARACTERISTICS

SYMBOL	PARAMETER	CONDITIONS	MAX	UNIT
V_{FM}	Forward Voltage drop	$I_{FM} = 17.5A$	1.2	V
I_{RRM}	Repetitive Peak Reverse Current	$V_R = V_{RRM}$	10	μA

■ Characteristics (Typical)

FIG1: I_o - T_c Curve

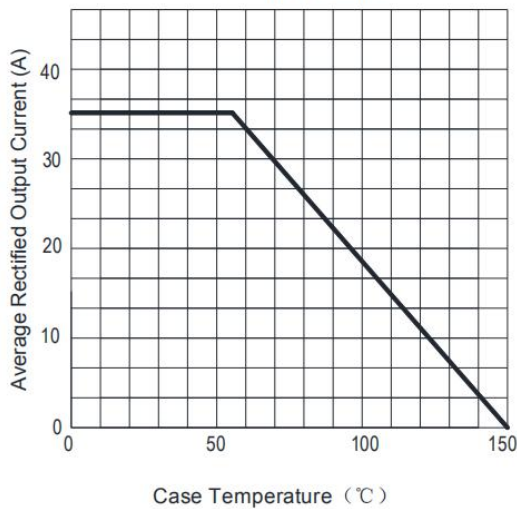


FIG2: Surge Forward Current Capability

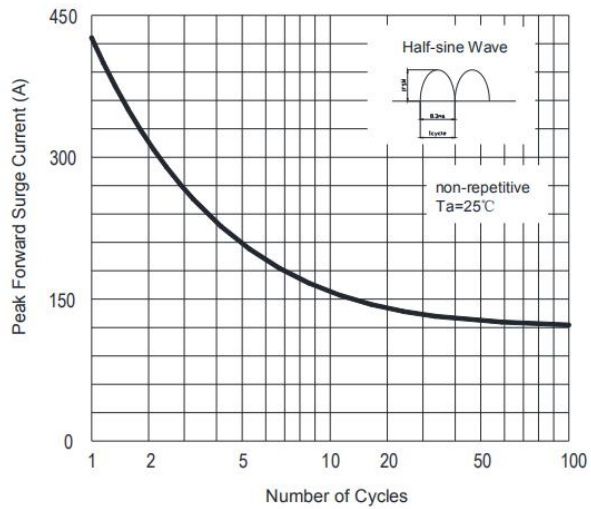


FIG3: Instantaneous Forward Voltage

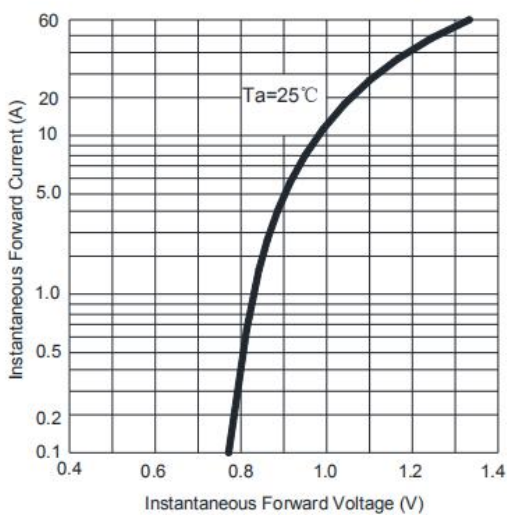
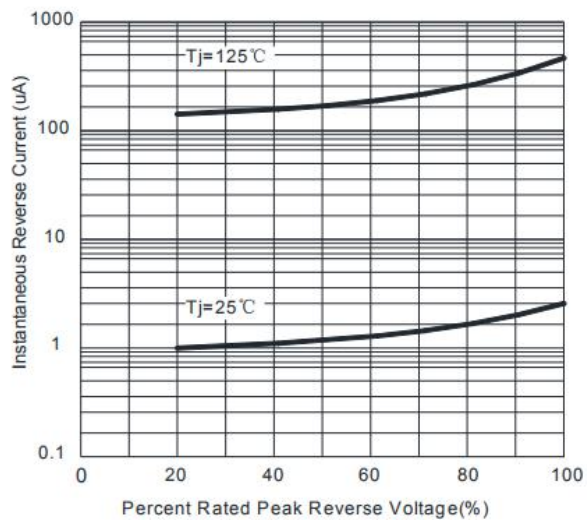
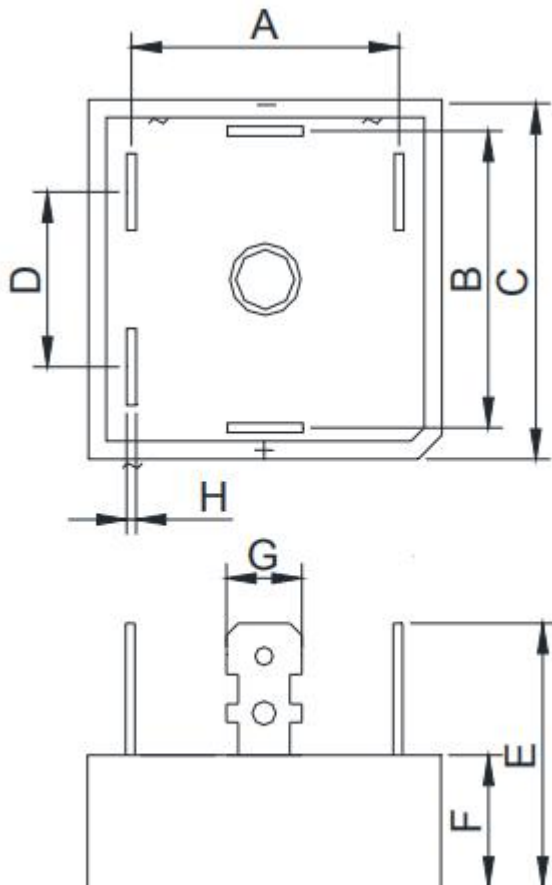


FIG4: Typical Reverse Characteristics



PACKAGE OUTLINE

Dimensions in mm (1mm = 0.0394")



DIM	mm	
	MIN	MAX
A	23.1	24.1
B	23.1	24.1
C	28.2	28.8
D	16	17
E	/	25
F	10.8	11.2
G	6.2	6.4
H	0.75	0.85

NOTICE:

ISC reserves the rights to make changes of the content herein the datasheet at any time without notification. The information contained herein is presented only as a guide for the applications of our products.

ISC products are intended for usage in general electronic equipment. The products are not designed for use in equipment which require specialized quality and/or reliability, or in equipment which could have applications in hazardous environments, aerospace industry, or medical field. Please contact us if you intend our products to be used in these special applications.

ISC makes no warranty or guarantee regarding the suitability of its products for any particular purpose, nor does ISC assume any liability arising from the application or use of any products, and specifically disclaims any and all liability, including without limitation special, consequential or incidental damages.